

YOUR
MOBILITY
BUSINESS
PARTNER



securex 

SECUREX

GROUP



1905

year of creation

1700

colleagues

Securex, it is also an international network of partners ready to assist you.



Luxembourg



The Netherlands



Belgium



Spain



France

LUXEMBOURG

51

colleagues

17

years of existence

more than 900

clients in Luxembourg

Mission:

Securex assists you in all operational aspects of HR management, allowing you to focus entirely on the success of your business:

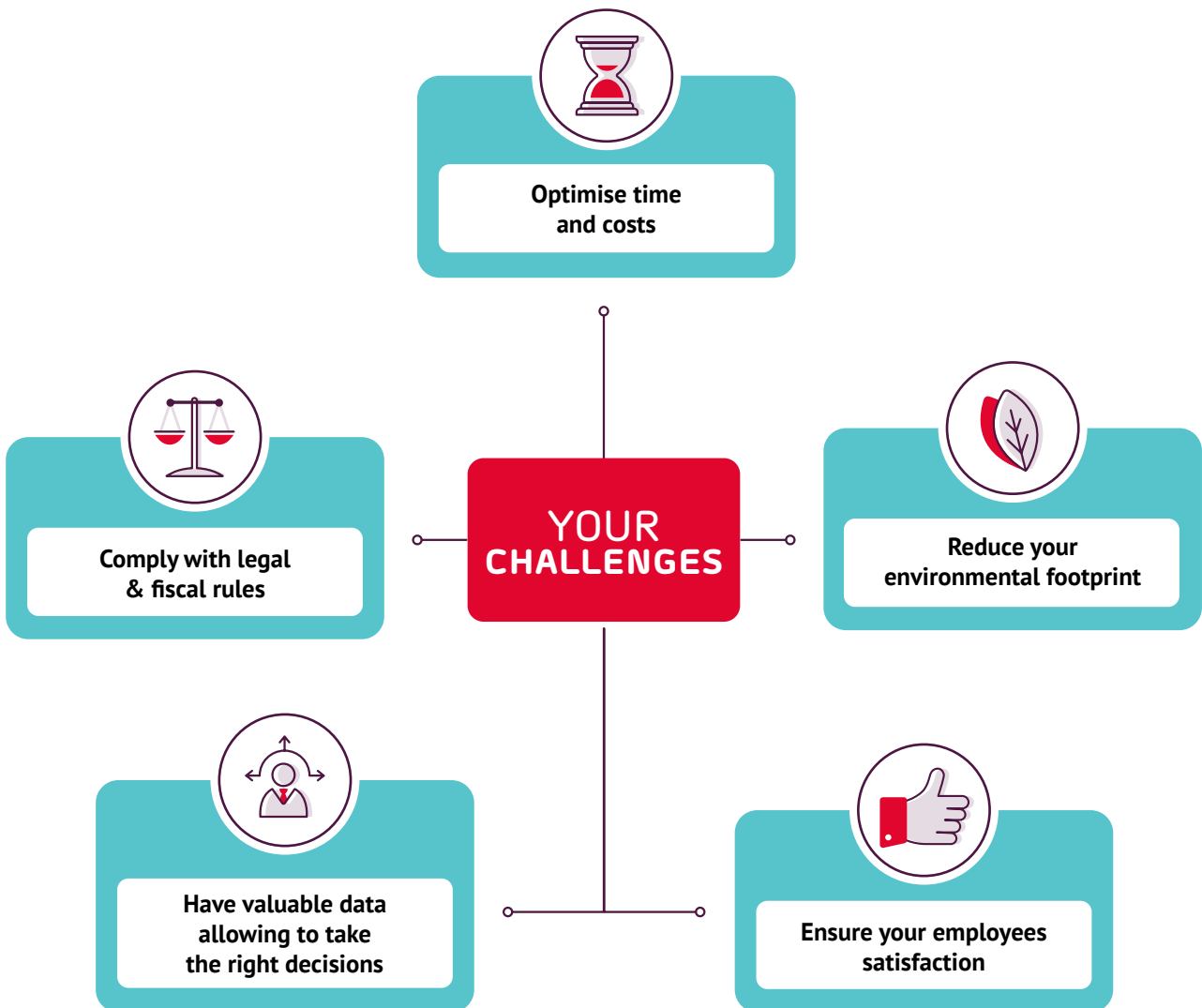
Securex, your HR Business Partner.



YOUR NEEDS



The **management of your fleet** is closely connected with your HR & CSR policies, impacting the relationship with your employees. It is also **time consuming** and a **heavy financial burden**.



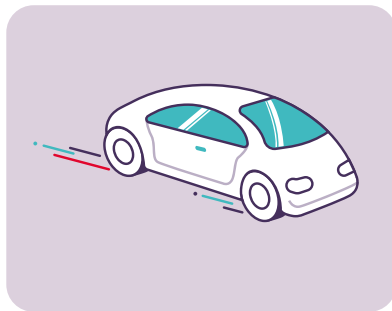
OUR SOLUTION

"WE ENABLE YOU TO SHINE"

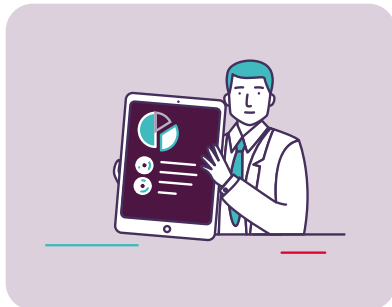


Outsource your mobility to an expert:

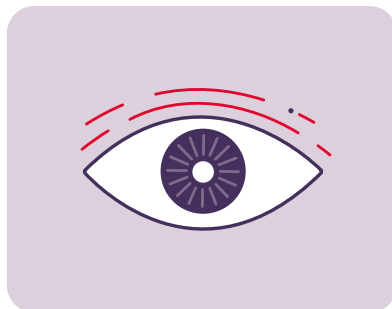
MOBILITY MANAGEMENT



An **innovative** and **flexible** fleet management

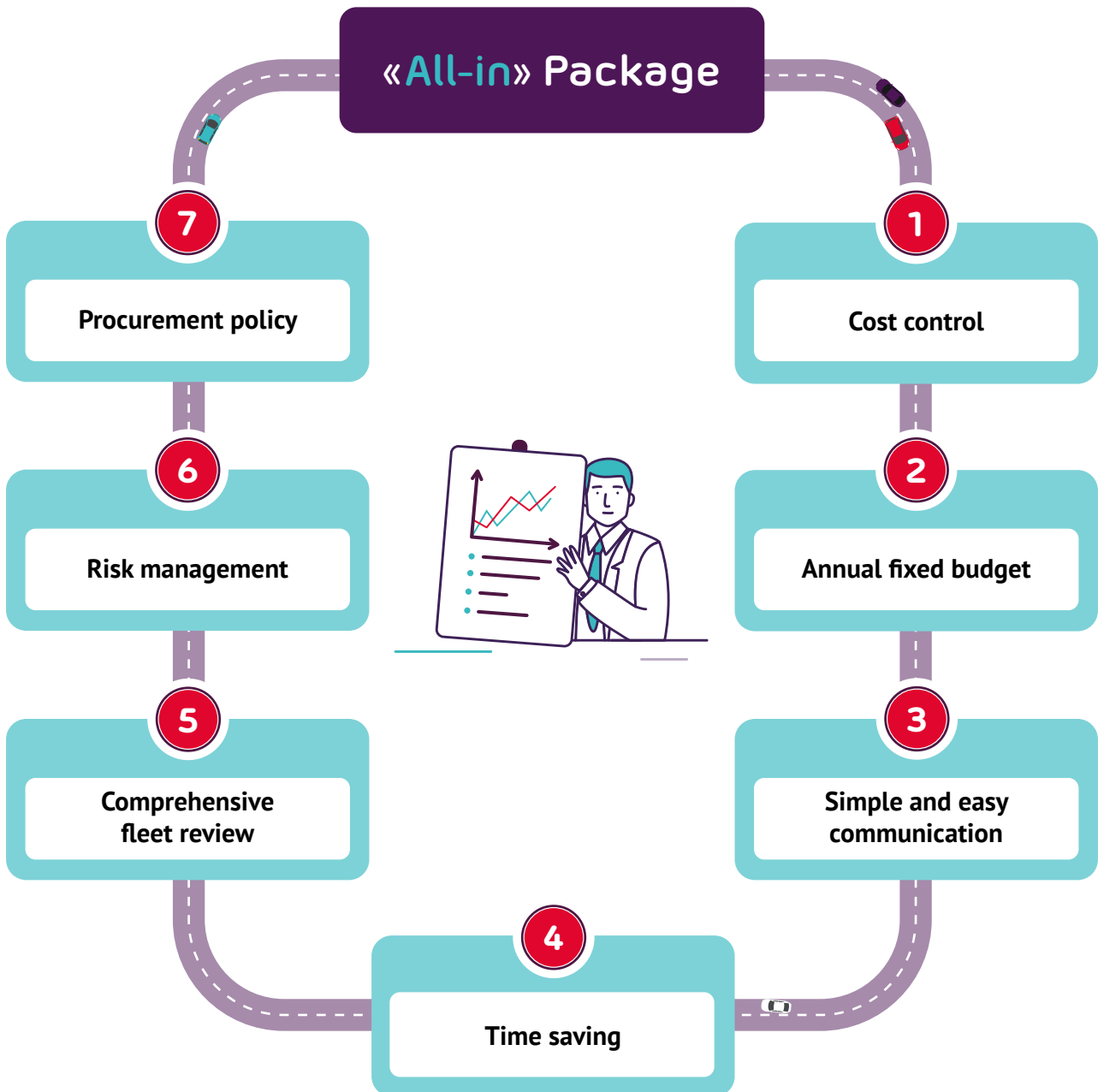


A new way to **simplify** your **HR process**



A **complete** and **comprehensive** overview of your **costs**

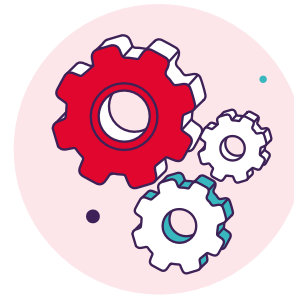
YOUR ADVANTAGES



OUR APPROACH



Fleet review



Strategy



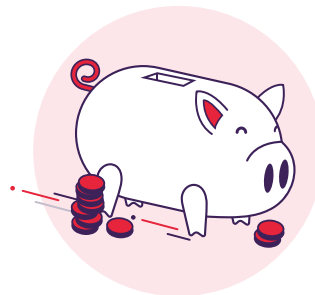
Invoicing management



Employee support



Operational management,
in/out staff

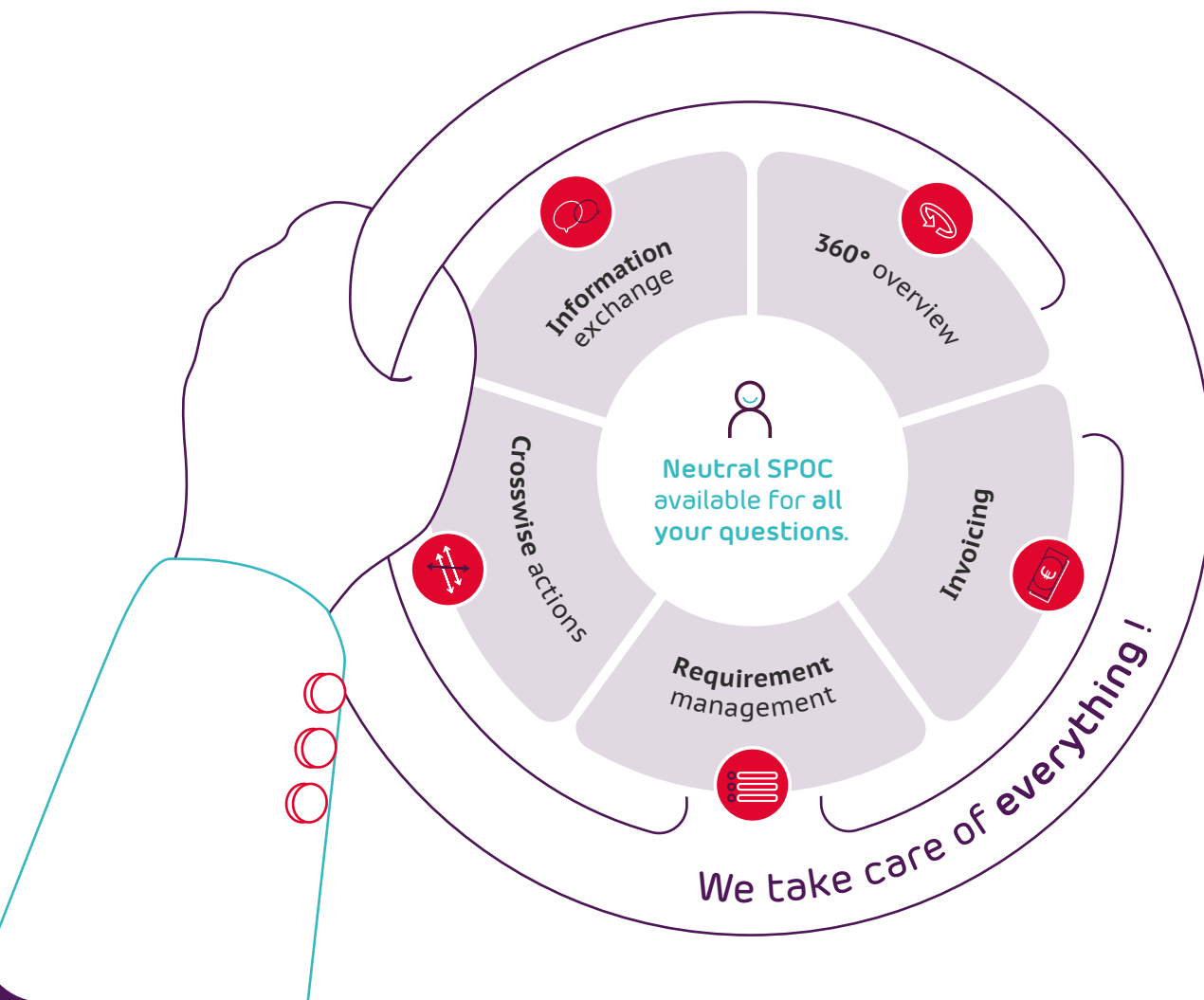


Payroll integration possibility

MOBILITY MANAGEMENT

TURNKEY SOLUTION

Securex makes **the connection** with all the **stakeholders**.



FLEET@SECUREX.LU

Virginie Echelin

Business Development Manager Lux

M +352 621 286 275

Securex Luxembourg
2, Avenue du Blues • L-4368 Belvaux

www.securex.lu

